

# BROW PIGMENTS

## HYBRID LONG LASTING



**Spritz** ● 15 ml cod. E15-65  
*Warm Blond*

Light blond. Hybrid, long lasting formula.  
This color appears warm but will heal neutral.



**Piña colada** ● 15 ml cod. E15-66  
*Warm Ligth Brown*

Dark blond/ Light brown. Hybrid, long lasting formula.  
This color appears warm but will heal neutral.



**Margarita** ● 15 ml cod. E15-67  
*Warm Brown*

Medium brown. Hybrid, long lasting formula.  
This color appears warm but will heal neutral.



**Mojito** ● 15 ml cod. E15-68  
*Warm Dark Brown*

Dark brown. Hybrid, long lasting formula.  
This color appears warm but will heal neutral.



**Bellini** ● 15 ml cod. E15-69  
*Warm Extra Dark Brown*

Extra dark brown. Hybrid, long lasting formula.  
Even tho the hue is quite dark, you should not be afraid to use it; it doesn't heal gray.

● Neutral ● Warm

# BROW PIGMENTS

## INORGANIC LIQUID



Mimosa ● 15 ml cod. E15s-60  
*Neutral Blond*

Beautiful honey blonde.  
Mimosa pigment has a neutral undertone, which makes it perfect for use on all blonde clients, with fair skin phototype (Fitzpatrick 1) and natural really blond brow hair.



Moscow mule ● 15 ml cod. E15s-61  
*Neutral Ligth Brown*

Beautiful dark blond / light brown. Moscow Mule pigment has a neutral undertone, which makes it perfect for use on all clients with light skin (phototype Fitzpatrick 2) and natural dark blond brow hair.



Sex on the beach ● 15 ml cod. E15s-62  
*Neutral Brown*

Beautiful medium brown.  
Sex on the Beach pigment has a neutral undertone, which makes it perfect for use on all clients with intermediate skin (phototype Fitzpatrick 3-4) and natural medium brown brow hair.



Martini ● 15 ml cod. E15s-63  
*Neutral Dark Brown*

Beautiful dark brown.  
Martini pigment has a neutral undertone, which makes it perfect for use on all clients with medium to dark skin (phototype Fitzpatrick 4 - 5) and natural dark brown brow hair.



Cosmopolitan ● 15 ml cod. E15s-64  
*Neutral Extra Dark Brown*

Beautiful extra dark brown/almost black.  
Cosmopolitan pigment has a neutral undertone, which makes it perfect for use on all clients with medium to dark skin (phototype Fitzpatrick 4 - 5 - 6) and natural extra dark brown brow hair.

● Neutral ● Warm

# BROW PIGMENTS

## INORGANIC CREAMY



Moscow ● 15 ml cod. E15s-02  
*Neutral Blond*

Neutral blond color for eyebrows. Moscow is ideal for working on fair skin and blond eyebrows. The color has a prevalence of yellow and a neutral undertone.



Ibiza ● 15 ml cod. E15s-05  
*Neutral Light Brown*

Neutral light brown color for eyebrows. Ibiza has a neutral tendency which makes it ideal for working on all neutral skins with light brown eyebrows. Do not use it on warm skin tones.



Paris ● 15 ml cod. E15s-08  
*Neutral Brown*

Neutral brown color for eyebrows. Paris has a neutral tendency which makes it ideal for working on all neutral skins with brown eyebrows. Do not use it on warm skin tones.



Milan ● 15 ml cod. E15s-11  
*Neutral Dark Brown*

Neutral dark brown color for eyebrows. Milan has a neutral tendency which makes it ideal for working on all neutral skins with dark brown eyebrows. Do not use it on warm or cold skin undertones.



Venice ● 15 ml cod. E15s-14  
*Neutral Extra Dark Brown*

Neutral dark brown color for eyebrows. Venice has a neutral tendency which makes it ideal for working on all neutral skins (i.e. not tending to red or green) with very dark eyebrows.

● Neutral ● Warm

# LIP PIGMENTS



Glacè 15 ml cod. E15s-41

Brownish lip color. Ideal for lips outlining and contouring.



Romantic 15 ml cod. E15s-42

Nude light brown lip color.



Love 15 ml cod. E15s-43

Love is a medium pink lip color, that right touch of color to wear on any occasion.



Lollipop 15 ml cod. E15s-44

Lollipop is a intermediate purplish pink lip color. Perfect and versatile to be shown off on any occasion.



Super Model 15 ml cod. E15s-45

Supermodel is a lip color with raspberry vibes.



Rebel 15 ml cod. E15s-49

Rebel is vibrant and intense violet fuchsia lip color.



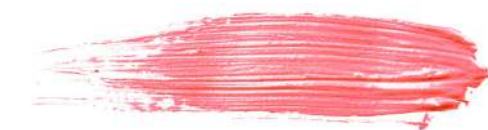
Bite 15 ml cod. E15s-48

Bite is a bright pink lip color.



Parfum 15 ml cod. E15s-46

Parfum is a natural antique pink lip color.



Bubble 15 ml cod. E15s-47

Bubble is a soft warm pink lip color.



Dream 15 ml cod. E15s-50

Dream is a bright cherry lip color.



Sexy 15 ml cod. E15s-51

Sexy is a fier red lip color. A great classic, the red lipstick, emblem of femininity and sensuality.



Casinò 15 ml cod. E15s-52

Casinò is an orange peach lip color. Ideal dark lips.



# LIP PIGMENTS



Summer

15 ml cod. E15s-53

Summer is a bright coral shade with a pink touch lip color.



Daiquiri

15 ml cod. E15s-54

Daiquiri is a lip color in shades of bright coral.



Flower

15 ml cod. E15s-55

Flower is a nude lip color with a peach accent. Reminds us of the velvet petals during blossom.



Kelly

15 ml cod. E15s-56

Kelly is a nude shade with peachy vibes.



Passion

15 ml cod. E15s-57

Passion is a nude shade with pink vibes lip color, an irresistible must-have to wear every day.



Fashion

15 ml cod. E15s-58

Fashion is a bright cherry lip color.



Bordeaux

15 ml cod. E15s-59

Bordeaux/cool red lip color.

# SKIN PIGMENTS



Fair 1 15 ml cod. E15s-25

Fair 1 is a skin color for permanent makeup and microblading.  
The Fair 1 pigment from Biotek is a very light skin color, with a slight pinkish tendency.



Fair 2 15 ml cod. E15s-26

Fair 2 is a skin color for permanent makeup and microblading.  
The Fair 2 pigment from Biotek is a very light skin color, with a slight pinkish tendency.



Fair 3 15 ml cod. E15s-27

Fair 3 is a skin color for permanent makeup and microblading.  
The Fair 3 pigment from Biotek is a light skin color, with a slight pinkish tendency.



Medium 1 15 ml cod. E15s-28

Medium 1 is a skin color for permanent makeup and microblading.  
Biotek Medium 1 pigment is an intermediate skin color with a slight yellow undertone.



Medium 2 15 ml cod. E15s-29

Medium 2 is a skin color for permanent makeup and microblading.  
Biotek Medium 2 pigment is an intermediate skin color with a slight yellow undertone.



Medium 3 18 ml cod. E15s-30

Medium 3 is a skin color for permanent makeup and microblading.  
Biotek Medium 3 pigment is an intermediate skin color with a slight yellow undertone.



Tan 1 15 ml cod. E15s-31

Tan 1 is a skin color for permanent makeup and microblading.  
The Tan 1 pigment by Biotek is a deep skin color with a slight orange tendency.



Tan 2 15 ml cod. E15s-32

Tan 2 is a skin color for permanent makeup and microblading.  
The Tan 2 pigment by Biotek is a deep skin color with a slight orange tendency.



Tan 3 15 ml cod. E15s-33

Tan 3 is a skin color for permanent makeup and microblading.  
The Tan 3 pigment by Biotek is a deep skin color with a slight orange tendency.

# MIXING & CORRECTOR



Orange

15 ml cod. E15s-18

Orange is a mixing color/modifier for permanent make-up and microblading pigments. Biotek's Orange color can be added to another color, in the capsule, to make it warmer.



Green

15 ml cod. E15s-21

Green: is a mixing color for permanent make-up and microblading pigments. The Green color of Biotek can be added to another color, in the capsule, to make it colder. Green, added to another eyebrow color, is ideal for correcting red eyebrows.



Odra

15 ml cod. E15s-22

Odra is a corrector for permanent makeup and microblading. Odra color by Biotek is used to correct eyebrows turned to gray and purple. Use it pure and apply it only in the areas to be corrected.



Safari

15 ml cod. E15s-23

Safari is a permanent makeup and microblading corrector. Biotek's Safari color is used to correct old PMU treatments on the lips. It is ideal for covering dark areas due to the deep implantation of pigments.



Orange red

15 ml cod. E15s-24

Orange red is a corrector for permanent makeup and microblading. The Biotek Orange Red color is used to correct and neutralize dark pigmentation on lips. Apply Orange Red pure to the areas where the lip is darker and then, in the same session, cover the entire lip with another color from the Biotek range.



White

15 ml cod. E15s-16

Biotek's White pigment can be used to create beautiful highlights on lips, eyebrows and paramedical procedures.

# EYES PIGMENTS



Warm Black

15 ml cod. E15s-34

Warm Black: Permanent makeup color for eyes and eyeliner. Biotek's Warm Black pigment is an intense and warm black, ideal for graphic eyeliners and infrolashes.



Royal Black

15 ml cod. E15s-35

Royal Black: Permanent makeup color for eyes and eyeliner. Biotek's Royal Black pigment is a long-lasting intense black, ideal for graphic eyeliners and infrolashes.



Deep Ocean

EXTRA EU ONLY

15 ml cod. E15s-40

Deep Ocean: Permanent makeup color for eyes and eyeliner. Biotek's Deep Ocean pigment is an intense blue, ideal for a graphic eyeliner or a shaded eyeliner.



Blue Sky

EXTRA EU ONLY

15 ml cod. E15s-38

Blue sky: Permanent makeup color for eyes and eyeliner.

Biotek's Blue Sky pigment is a cool light blue, ideal for a graphic eyeliner or a shaded eyeliner.